

# MONTHLY MEMBERSHIP PROGRESS REPORT

District 5M 3

Results as of: 6/30/2024

GMT:

LOCATION MINNESOTA

GMT CA

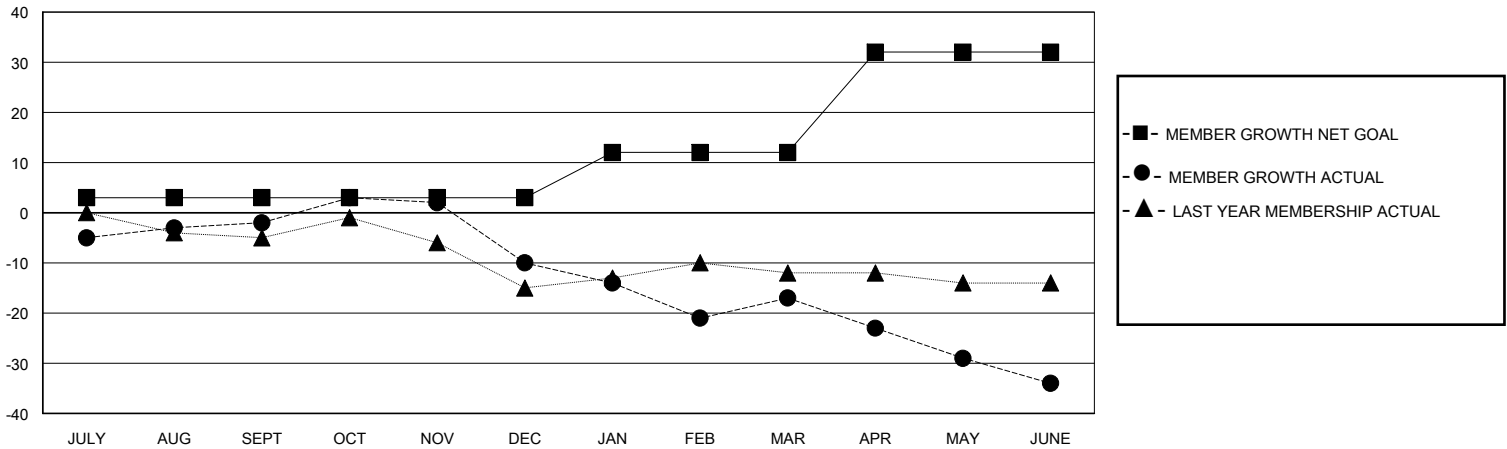
Clubs			
RESULTS FOR 2023-2024			
QUARTER	NEW CLUB GOAL	NEW CLUBS	DROPPED CLUBS
JULY/AUG/SEPT	0	0	0
OCT/NOV/DEC	0	0	0
JAN/FEB/MAR	0	0	0
APR/MAY/JUNE	1	0	0

Members			
RESULTS FOR 2023-2024			
QUARTER	MEMBER GROWTH NET GOAL	MEMBER GROWTH ACTUAL	DROPPED MEMBERS ACTUAL (including transfers)
JULY/AUG/SEPT	3	18	19
OCT/NOV/DEC	0	21	29
JAN/FEB/MAR	9	9	16
APR/MAY/JUNE	20	7	24

GOALS AND ACTUAL NEW CLUBS CUMULATIVE



GOALS AND ACTUAL MEMBERS CUMULATIVE



DROPPED CLUBS: 0	22 CLUBS OF 35 ADDED 1 OR MORE NEW MEMBERS	<b>GENDER DISTRIBUTION</b> MALE 724 (73.28%) FEMALE 264 (26.72%)
<b>DROPPED MEMBERS</b> DECEASED 19 CLUB CANCELLED 0 OTHER 69 TOTAL 88	<a href="#">CLICK HERE FOR CUMULATIVE MEMBERSHIP DATA</a>	TOTAL FAMILY UNIT MEMBERS 166 FAMILY MEMBERS PAYING HALF DUES 83